

ADJUSTMENTS

Hold Down:

Using the hex wrench provided, adjust the hold down tension. For best results, labels should be pressed firmly against the guide roller. However, if the labels are held too tightly, they will cause excessive drag on the motor.

Photosensor:

The photosensor can be adjusted by using the thumbscrew on the side of the machine. Loosening the thumbscrew allows the photosensor to move up and down. This is used to set the overhang distance of the label over the strip plate. It is also used to swivel the sensor in and out to optimize sensing angle and location.

MAINTENANCE

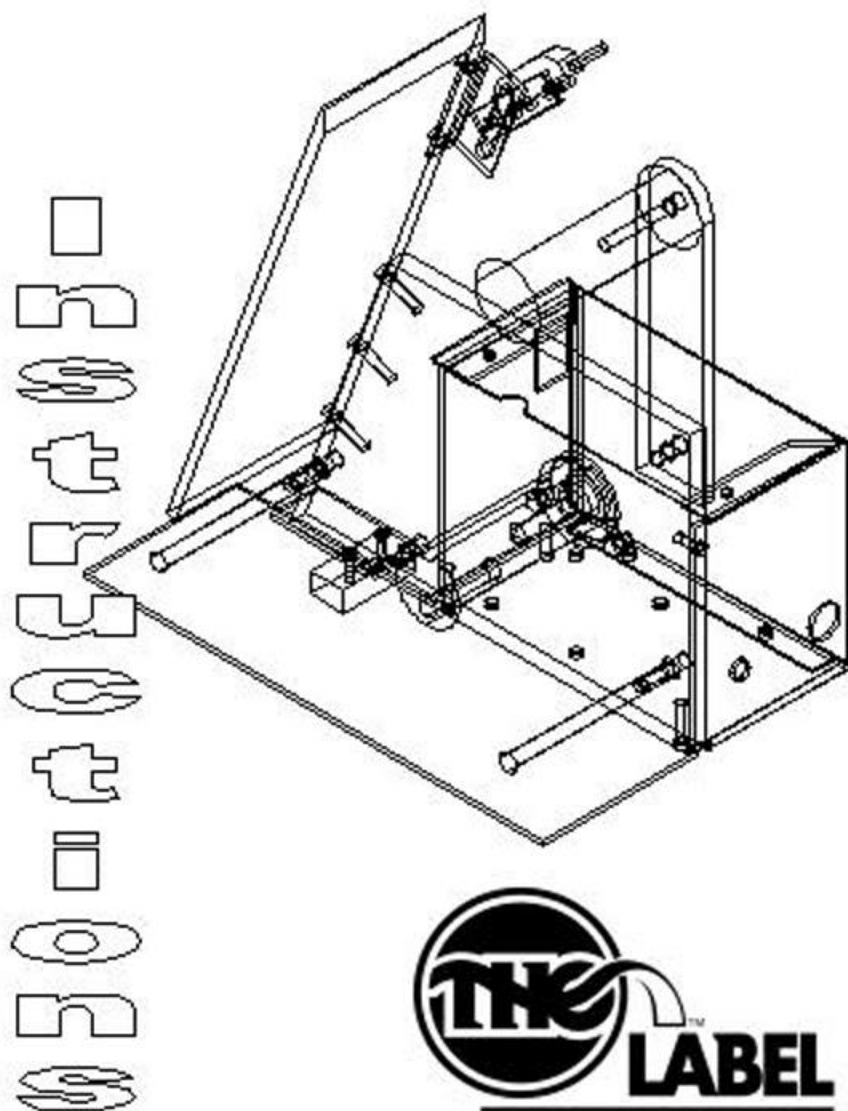
- Turn machine off when not in use.
- Remove liner material from take-up hub when it reaches approximately 2" in diameter or when the motor is straining.
- Do not operate the machine without cover in place.
- Do not operate if power or sensor cord is damaged.
- Keep strip plate, hold down and take-up hub free of adhesive build-up.



START International
4270 Airborn Dr.
Addison, TX 75001, USA
Tel 972.248.1999
Fax 972.248.1991
info@startinternational.com
www.startinternational.com

START Japan Corporation
1-26-14 Toshin-Cho
Habashi-ku
Tokyo, Japan
Tel 81.3.35545608
Fax 81.3.5966.9591
japan@startinternational.com

LD2500



Features

- Will dispense butt-cut and die-cut material.
- Adjustable photosensor for pinpoint accuracy.
- Handled lock rod makes scrap removal easy.

Notes

- Keep strip plate free of adhesive build-up.
- Clean photosensor with compressed air or dry cloth.
- Do not drop the dispenser or subject it to heavy shock.
- Turn off machine when not in use.

Repair Policy

Contact START INTERNATIONAL to determine nature of problem.

Furnish START with model number, serial number and date of purchase. (copy of invoice or packing list required.)

START will issue an RGA for repair. Return machine to START by UPS prepaid. Start will notify customer of repair charges prior to work being done. A \$25.00 evaluation charge will apply to all non-warranty repairs, which will be applied to repair charge.

Specifications

Liner Capacity Width	.25" to 2.25" (6.35mm to 57.15mm)
Label Length	.25" to 8" (6.35mm to 203.2mm)
Roll Capacity	6" (15.2cm)
Feed Speed	2.2" / sec (5.6cm / sec)
Dimensions	7.3" (L) x 4.9" (W) x 9.5" (H) 18.5cm (L) x 12.5cm (W) x 24.1 cm (H)
Weight	2.00 lb. (.91 kg.)
Electrical Requirements	12VDC 800mA with 115VAC adapter (220VAC adapter available)

Set-up Instructions

Place the label roll onto the reel hanger bar. Slide guide disc onto bar to keep the label roll straight.

Thread the liner under the first guide roller, between hold down and second guide roller and up over the strip plate. Lay the liner across the slot in the take-up hub. Lock the liner in position with the metal lock rod.

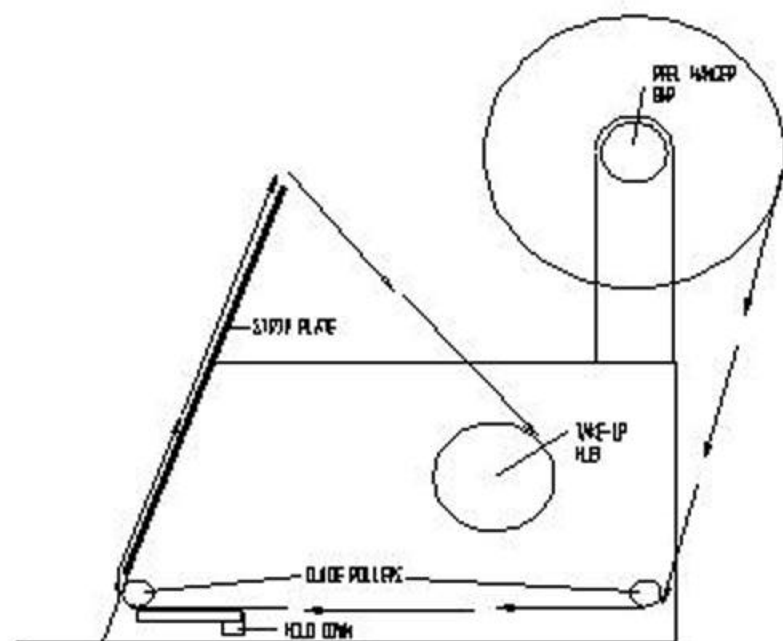


FIGURE 1

Daisy-chain option:

LD2500 dispensers can be "daisy-chained" together to operate in series. When a label is removed from one of the machines, the next label will not feed until the labels are removed from all the machines. (LD2000-CABLE needed for "daisy chain" operation.)